



October 1995

Educational Attainment and Employment

Victoria

Statistics

ABS Catalogue No. 4227.2

EMBARGOED UNTIL 11.30 A.M. 5 SEPTEMBER 1996

EDUCATIONAL ATTAINMENT AND EMPLOYMENT VICTORIA

Stuart Jackson
Deputy Commonwealth Statistician

AUSTRALIAN BUREAU OF STATISTICS

CATALOGUE NO. 4227.2

CONTENTS

		Page
EDITORIAL		
	Preface	v
	Main features	1
TABLES		
Summary tables		
	1 Selected characteristics by number of post-school qualifications	4
	2 Sex, age, employment status and number of post-school qualifications by certificate of less than one semester	5
	3 Employment status, current study status and course intentions by incomplete post-school qualification in last 5 years	5
	4 Current study status, course intentions and preferred occupation by employment status	6
Persons with post-school qualifications		
	5 Sex by number of post-school qualifications and type of post-school qualification by employment status	7
	6 Reasons for studying by number of post-school qualifications	8
	7 Educational attainment, current study status and course intentions by age	8
Employed persons		
	8 Age group, change in type of work, preferred occupation, current study status and course intentions by sex	9
	9 Whether working in preferred occupation by number of post-school qualifications	10
	10 Previous occupation in last 10 years, number of qualifications and perceived qualification requirement by current occupation	10
	11 Main occupation by whether working in preferred occupation	11
	12 Main occupation, length of current employment and preferred occupation by perceived qualification requirement	11
Unemployed persons		
	13 Age group, preferred occupation, current study status and course intentions by sex	12
INFORMATION		
	Explanatory notes	13
	Technical notes	18

-
- INQUIRIES
- *for further information about statistics in this publication*, contact Janine Lloyd on Melbourne (03) 9615 7689.
 - *for information about other ABS statistics and services*, please refer to the back page of this publication.
-

PREFACE

Each year the Australian Bureau of Statistics (ABS) conducts a survey on behalf of the Victorian Government. The topic for 1995 was Educational Attainment and Employment in Victoria which was conducted for the Department of Education.

The survey was conducted to obtain information on the links between education and training and employment outcomes for persons aged from 15 to 54 years. This publication summarises the results of the survey which was conducted throughout Victoria during October 1995 as a supplement to the Australia-wide Monthly Population Survey.

Stuart Jackson
Deputy Commonwealth Statistician

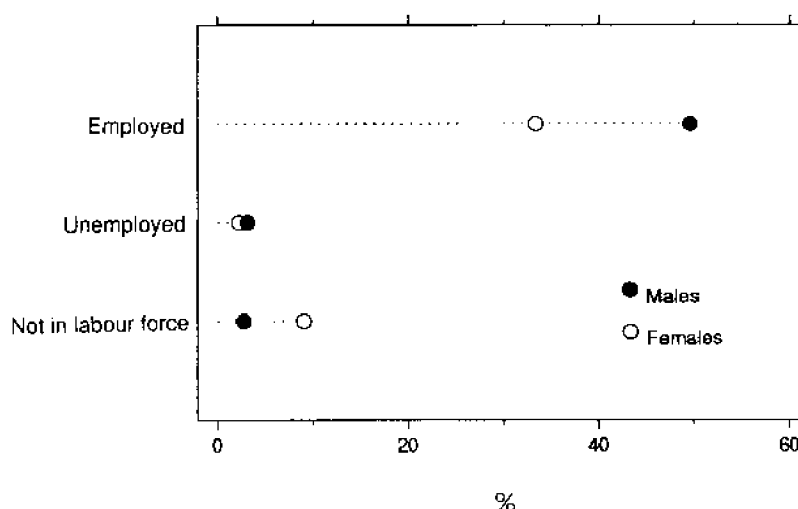
Australian Bureau of Statistics
September 1996

MAIN FEATURES

PERSONS AGED 15 TO 54 YEARS

- 41.1% (1,059,400) of persons had at least one post-school qualification.
- 4.3% (13,200) of persons aged 15 to 19 years had at least one post-school qualification and 37.3% (130,600) of persons aged 20 to 25 years, 47.8% (334,600) of persons aged 25 to 34 years, 48.6% (327,600) of persons aged 35 to 44 years and 46.0% (252,900) of persons aged 45 to 54 years had at least one post-school qualification.
- 45.4% (585,500) of males had at least one post-school qualification compared to 36.8% (473,900) of females.

PERSONS AGED 15 TO 54 YEARS WITH POST-SCHOOL QUALIFICATIONS: SEX AND EMPLOYMENT STATUS, VICTORIA, 1995



EMPLOYED PERSONS

- 47.8% (875,900) of employed persons had at least one post-school qualification compared to 29.1% (563,300) of unemployed persons and 23.0% (127,300) of persons not in the labour force.
- Of employed persons with post-school qualifications, 88.7% (201,900) of professionals and 84.1% (141,000) of tradespeople stated that their qualifications were required for their current occupation. This compares with 30.5% (15,600) of labourers and related workers and 38.6% (15,700) of persons employed as plant and machine operators and drivers who also stated that their qualifications were required for their current occupation.
- 81.6% (210,900) of employed persons who had two or more post-school educational qualifications were working in their preferred occupation compared to 77.2% (476,800) of persons with one post-school qualification and 65.7% (628,000) of persons with no post-school qualifications.

- Of employed persons who stated that their qualifications were needed to be employed in their current occupation, 86.6% (510,200) were currently working in their preferred occupation.
- 5.9% (107,700) of employed people, 24.3% (47,100) of unemployed persons and 5.7% (31,300) of persons not in the labour force did not know their preferred occupation.

PERSONS AGED 15 TO 54 WITH POST-SCHOOL QUALIFICATIONS: REASONS FOR STUDYING MOST RECENT QUALIFICATION

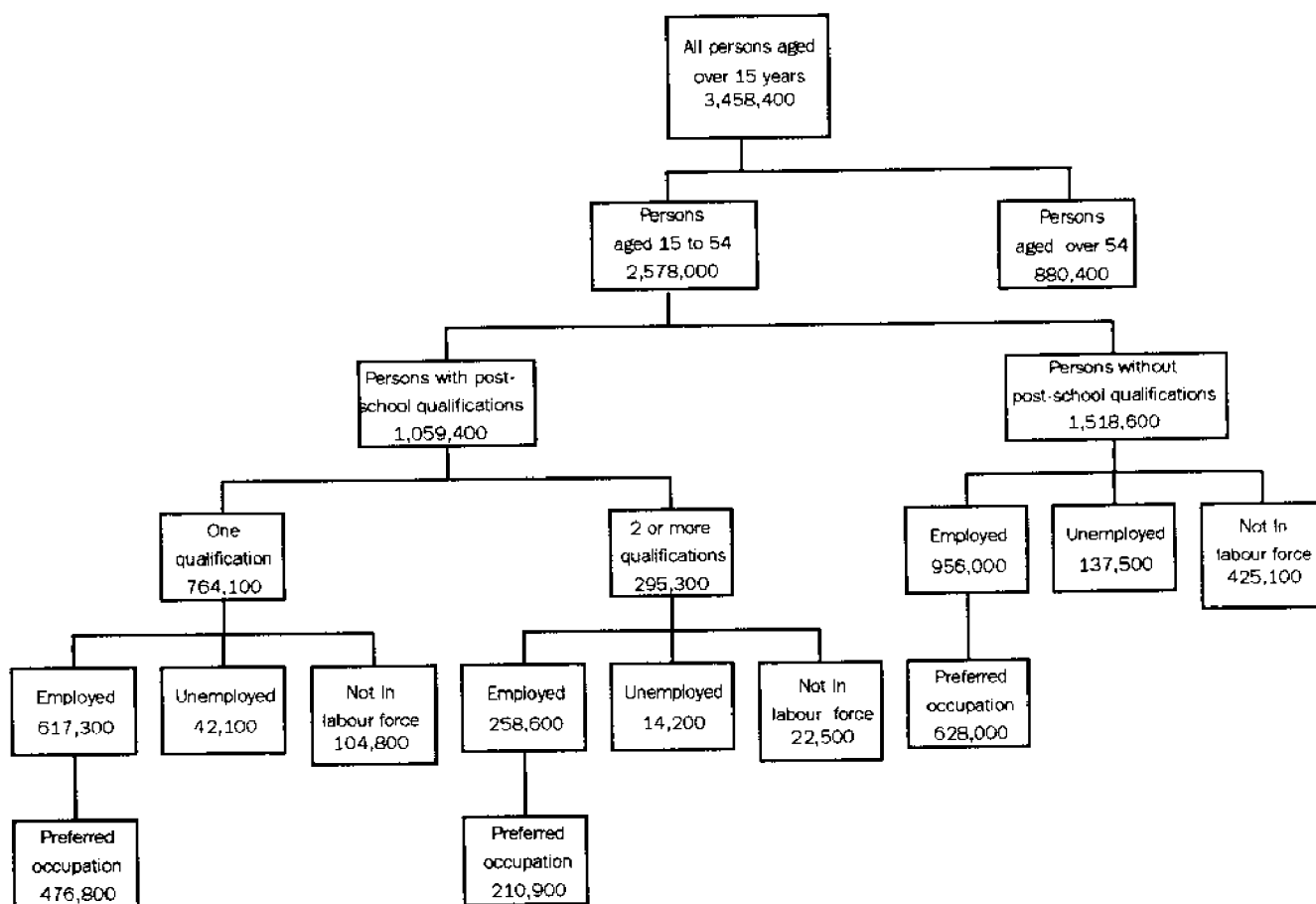


- The most frequently stated reason for people obtaining their most recent qualification was for career purposes, including those obtaining a qualification in order to get a specific position (61.9% or 693,500), followed by the need to be competitive in the job market (26.5% or 296,400) and then as a hobby or self-interest (22.1% or 247,200). Multiple reasons could be stated.

STUDY INTENTIONS

- 8.2% (210,700) of persons are currently studying for an educational qualification.
- Of persons who were studying for an educational qualification, 79.9% (168,300) were employed, 5.1% (10,700) were unemployed and 15.0% (31,700) were not in the labour force.
- 9.6% (248,700) of persons intended to start a course leading to an educational qualification.
- 9.0% (165,300) of employed persons intended to start a course in the next six months compared to 12.4% (24,100) of unemployed persons who intended to start a course leading to an educational qualification in the next six months.

The population covered by information in this publication relates only to those persons aged 15 to 54 years. The following chart outlines various populations found in the publication.



1

PERSONS AGED 15 TO 54 YEARS: SELECTED CHARACTERISTICS BY NUMBER OF POST-SCHOOL QUALIFICATIONS

	No qual- ifications '000	1 qual- ification '000	2 or more qual- ifications '000	Total '000	No qual- ifications %	1 qual- ification %	2 or more qual- ifications %	Total %
Sex								
Male	703.9	413.9	171.6	1 289.4	54.6	32.1	13.3	100.0
Female	814.7	350.2	123.7	1 288.6	63.2	27.2	9.6	100.0
Age group (years)								
15-19	290.9	13.2	**	304.6	95.5	4.3	**	100.0
20-24	219.3	116.7	13.9	349.9	62.7	33.4	4.0	100.0
25-34	366.4	253.3	81.3	700.9	52.3	36.1	11.6	100.0
35-44	345.9	215.0	112.6	673.4	51.4	31.9	16.7	100.0
45-54	296.2	165.9	87.0	549.2	53.9	30.2	15.8	100.0
Country of birth								
Australia	1 125.2	573.0	217.0	1 915.1	58.8	29.9	11.3	100.0
Other main English-speaking countries ¹	89.7	60.3	31.8	181.8	49.3	33.2	17.5	100.0
Other	303.7	130.9	46.5	481.1	63.1	27.2	9.7	100.0
Employment status								
Employed	956.0	617.3	258.6	1 831.9	52.2	33.7	14.1	100.0
Unemployed	137.5	42.1	14.2	193.7	71.0	21.7	7.3	100.0
Not in labour force	425.1	104.8	22.5	552.4	77.0	19.0	4.1	100.0
Victorian regions								
Inner Melbourne	60.7	38.3	27.0	126.0	48.1	30.4	21.4	100.0
Southern Melbourne	107.3	67.1	35.4	209.7	51.2	32.0	16.9	100.0
Inner-Eastern Melbourne	126.3	72.4	49.7	248.5	50.8	29.1	20.0	100.0
North-Eastern Melbourne	166.0	67.7	20.6	254.3	65.3	26.6	8.1	100.0
North-Western Melbourne	82.9	53.3	12.4	148.5	55.8	35.9	8.3	100.0
Outer-Western Melbourne	196.7	78.9	21.6	297.2	66.2	26.5	7.3	100.0
Mornington Peninsula	55.0	33.6	15.9	104.5	52.7	32.1	15.2	100.0
Outer-Eastern Melbourne	157.5	96.7	26.2	280.4	56.2	34.5	9.3	100.0
South-Eastern Victoria	149.4	71.9	*9.0	230.3	64.9	31.2	*3.9	100.0
Barwon-Western District	119.3	53.6	22.7	195.6	61.0	27.4	11.6	100.0
Central Highlands-Wimmera	64.3	30.1	*8.6	103.0	62.4	29.2	*8.3	100.0
Loddon-Campaspe-Mallee	84.8	34.5	*9.6	129.0	65.8	26.8	*7.5	100.0
Goulburn-Ovens-Murray	87.5	35.8	19.1	142.4	61.5	25.1	13.4	100.0
All Gippsland	60.9	30.1	17.5	108.6	56.1	27.8	16.1	100.0
Area of usual residence								
Melbourne Statistical Division	1 101.7	580.0	217.8	1 899.5	58.0	30.5	11.5	100.0
Rest of Victoria	416.8	184.2	77.5	678.5	61.4	27.1	11.4	100.0
Educational attainment								
Masters degree, Doctorate	n.a.	n.a.	44.6	44.6	n.a.	n.a.	100.0	100.0
Post graduate diploma	n.a.	n.a.	95.2	96.0	n.a.	n.a.	99.2	100.0
Bachelor degree	n.a.	169.4	56.4	225.9	n.a.	75.0	25.0	100.0
Undergraduate diploma	n.a.	63.7	15.2	78.9	n.a.	80.8	19.2	100.0
Associate diploma	n.a.	115.8	44.4	160.1	n.a.	72.3	27.7	100.0
Skilled Vocational Qualification	n.a.	234.6	*6.8	241.5	n.a.	97.2	*2.8	100.0
Basic Vocational Qualification	n.a.	179.8	32.8	212.6	n.a.	84.6	15.4	100.0
No qualification	1 518.6	—	—	1 518.6	100.0	—	—	100.0
Total	1 518.6	764.1	295.3	2 578.0	58.9	29.6	11.5	100.0

¹ Includes: United Kingdom, Ireland, Canada, South Africa, USA and New Zealand.

2

PERSONS AGED 15 TO 54 YEARS: SEX, AGE, EMPLOYMENT STATUS AND NUMBER OF POST-SCHOOL QUALIFICATIONS BY CERTIFICATE ACCREDITATIONS¹

	At least 1 certificate of less than one semester '000	No certificate of less than one semester '000	Total '000
Sex			
Male	36.6	1 252.8	1 289.4
Female	51.5	1 237.0	1 288.6
Age group (years)			
15-24	20.6	634.0	654.5
25-34	28.4	672.5	700.9
35-44	29.5	643.9	673.4
45-54	*9.7	539.5	549.2
Employment status			
Employed	65.1	1 766.9	1 831.9
Unemployed	*9.1	184.6	193.7
Not in labour force	14.0	538.4	552.4
Number of post-school qualifications			
No qualifications	60.6	1 458.0	1 518.6
1 qualification	16.3	747.9	764.2
2 or more post-school qualifications	11.3	284.0	295.3
Total	88.2	2 489.9	2 578.0

¹ Certificates of less than 200 hours which are not regarded as a post-school qualification by the ABS.

3

PERSONS AGED 15 TO 54 YEARS: EMPLOYMENT STATUS AND COURSE INTENTIONS¹ BY INCOMPLETE² POST-SCHOOL QUALIFICATION

	Incomplete post-school qualification '000	No incomplete post-school qualifications '000	Incomplete VCE or certificate ³ '000	Total ⁴ '000
Employment status				
Employed	204.2	1 543.2	19.4	1 831.9
Unemployed	17.3	152.5	*6.2	193.7
Not in labour force	28.7	421.6	*5.2	552.4
Current study status				
Currently studying post-school qualification	27.3	168.0	**	197.1
Currently studying VCE or certificate ²	**	*11.0	**	13.6
Not currently studying post-school qualification	215.5	1 834.7	28.9	2 084.9
Course intentions				
Intend to start post-school qualification	34.4	128.3	**	212.1
Intend to start VCE or certificate ³	*4.4	20.1	**	36.6
Do not intend to start post-school qualification	192.6	1 851.7	22.8	2 173.3
Don't know if intend to start educational qualification	18.1	112.4	*4.3	141.7
Total⁴	250.2	2 117.3	30.7	2 578.0

¹ Persons intending to start a course of study leading to a post-school qualification in the next six months.

² Excluding current study, any attempted but not completed post-school qualification in last five years.

³ Includes certificates of less than one semester.

⁴ Includes persons who are still studying and retired persons who are studying.

4

PERSONS AGED 15 TO 54 YEARS: CURRENT STUDY STATUS, INTENTIONS¹ TO DO A COURSE
AND PREFERRED OCCUPATION² BY EMPLOYMENT STATUS

	Employed '000	Unemployed '000	Not in labour force '000	Total '000	Employed %	Unemployed %	Not in labour force %	Total %
Current study status								
Currently studying post-school qualification	159.8	*9.4	28.0	197.1	81.1	*4.8	14.2	100.0
Currently studying VCE or certificate ³	*8.5	**	*3.7	13.6	*62.8	**	*27.5	100.0
Not currently studying post-school qualification	1 555.3	158.7	370.9	2 084.9	74.6	7.6	17.8	100.0
Course intentions								
Intend to start a course leading to a post-school qualification	141.4	19.6	51.1	212.1	66.7	9.3	24.1	100.0
Intend to start studying VCE or certificate ³	23.9	*4.5	*8.2	36.6	65.3	*12.2	*22.5	100.0
Do not intend to start a course leading to a post-school qualification	1 567.8	151.1	454.4	2 173.3	72.1	7.0	20.9	100.0
Don't know if intend to start an educational qualification	94.1	17.8	29.8	141.7	66.4	12.6	21.0	100.0
Preferred occupation group								
Managers and administrators	35.6	*10.1	**	46.7	76.3	*21.7	**	100.0
Professionals	140.9	37.9	27.3	206.1	68.4	18.4	13.2	100.0
Para-professionals	24.6	*4.2	*9.7	38.5	63.8	*11.0	*25.2	100.0
Tradespersons	49.0	16.2	13.7	78.9	62.0	20.6	17.4	100.0
Clerks	37.0	25.8	**	64.6	57.3	40.0	**	100.0
Salespersons and personal service workers	40.5	21.1	**	62.9	64.4	33.6	**	100.0
Plant and machine operators and drivers	13.6	*7.8	**	21.4	63.6	*36.4	**	100.0
Labourers and related workers	*10.1	*10.8	**	21.7	*46.6	*49.8	**	100.0
Did not know preferred occupation	107.7	47.1	31.3	186.0	57.9	25.3	16.8	100.0
Not applicable ⁴	1 372.9	12.6	465.6	1 851.2	74.2	0.7	25.2	100.0
Total⁵	1 831.9	193.7	552.4	2 578.0	71.1	7.5	21.4	100.0

¹ Persons intending to start a course of study leading to an educational qualification in the next six months.

² Persons indicating the occupation group they would prefer to work in.

³ Includes certificates of less than one semester.

⁴ Includes persons who were working in preferred occupation and persons who did not state preferred occupation.

⁵ Includes persons who are still studying and retired persons who are studying.

5

PERSONS AGED 15 TO 54 YEARS WITH POST-SCHOOL QUALIFICATIONS: SEX BY NUMBER OF
POST-SCHOOL QUALIFICATIONS AND TYPE OF POST-SCHOOL QUALIFICATION¹ BY EMPLOYMENT STATUS

	Employed '000	Un- employed '000	Not in labour force '000	Total '000	Employed %	Un- employed %	Not in labour force %	Total %
MALES								
Number of qualifications								
1 qualification	368.7	22.6	22.6	413.9	89.1	5.5	5.5	100.0
2 or more qualifications	153.3	*10.3	*8.0	171.6	89.3	*6.0	*4.7	100.0
Type of qualification								
Higher Degree	24.8	**	**	29.1	85.1	**	**	100.0
Post-graduate Diploma	52.6	*3.4	**	56.7	92.9	*5.9	**	100.0
Bachelor	162.4	11.7	*9.2	183.3	88.6	6.4	*5.0	100.0
Undergraduate Diploma	33.3	**	**	36.1	92.4	**	**	100.0
Associate Diploma	102.5	*5.9	*8.1	116.5	88.0	*5.0	*7.0	100.0
Skilled Vocational Qualification	229.4	11.4	*9.6	250.3	91.6	4.5	*3.8	100.0
Basic Vocational Qualification	75.6	*7.0	**	85.4	88.5	*8.2	**	100.0
Total	522.0	32.9	30.6	585.5	89.2	5.6	5.2	100.0
FEMALES								
Number of qualifications								
1 qualification	248.6	19.4	82.2	350.2	71.0	5.6	23.5	100.0
2 or more qualifications	105.3	*3.9	14.5	123.7	85.2	*3.1	11.7	100.0
Type of qualification								
Higher Degree	12.3	**	**	15.5	79.3	**	**	100.0
Post-graduate Diploma	45.3	**	*4.8	50.7	89.5	**	*9.5	100.0
Bachelor	136.4	*5.0	21.2	162.7	83.9	*3.1	13.0	100.0
Undergraduate Diploma	64.6	*4.5	16.2	85.3	75.7	*5.3	19.0	100.0
Associate Diploma	58.1	*5.8	11.7	75.7	76.8	*7.7	15.5	100.0
Skilled Vocational Qualification	22.9	**	11.9	35.4	64.6	**	33.6	100.0
Basic Vocational Qualification	116.6	*8.0	40.1	164.8	70.8	*4.9	24.4	100.0
Total	353.9	23.3	96.7	473.9	74.7	4.9	20.4	100.0
PERSONS								
Number of qualifications								
1 qualification	617.3	42.1	104.8	764.2	80.8	5.5	13.7	100.0
2 or more qualifications	258.6	14.2	22.5	295.3	87.6	4.8	7.6	100.0
Type of qualification								
Higher Degree	37.0	*3.5	*4.0	44.6	83.1	*7.9	*9.0	100.0
Post-graduate Diploma	98.0	*3.8	*5.5	107.3	91.3	*3.6	*5.1	100.0
Bachelor	298.8	16.7	30.5	346.0	86.4	4.8	8.8	100.0
Undergraduate Diploma	97.9	*5.5	18.0	121.4	80.7	*4.5	14.8	100.0
Associate Diploma	160.7	11.7	19.8	192.2	83.6	6.1	10.3	100.0
Skilled Vocational Qualification	252.3	12.0	21.5	285.8	88.3	4.2	7.5	100.0
Basic Vocational Qualification	192.2	15.0	42.9	250.1	76.8	6.0	17.2	100.0
Total	875.9	56.3	127.3	1 059.4	82.7	5.3	12.0	100.0

¹ Includes persons with multiple post-school qualifications.

6

PERSONS AGED 15 TO 54 YEARS WITH POST-SCHOOL QUALIFICATIONS: REASONS FOR STUDYING BY NUMBER OF POST-SCHOOL QUALIFICATIONS

Reasons for studying ¹	1 qualification '000	2 or more qualifications '000	Total '000	1 qualification %	2 or more qualifications %	Total %
Career/to get specific job	527.2	149.8	677.0	69.0	50.7	63.9
To get any job	86.4	*9.6	96.0	11.3	*3.3	9.1
The need for a qualification to be competitive in the job market	181.4	98.1	279.5	23.7	33.2	26.4
Money/to get more pay	115.7	50.7	166.4	15.1	17.2	15.7
To try for a different career	35.0	38.7	73.7	4.6	13.1	7.0
Was a requirement of the job	131.5	42.3	173.8	17.2	14.3	16.4
Was a requirement of the employer	64.7	27.6	92.2	8.5	9.3	8.7
To get a better job or promotion	88.7	79.1	167.8	11.6	26.8	15.8
To get extra skills for present job	76.0	104.3	180.3	9.9	35.3	17.0
Required to study by CES	**	**	*3.0	**	**	*0.3
To get into another course of study	15.8	14.3	30.2	2.1	4.9	2.8
Self-interest/hobby	160.7	71.1	231.8	21.0	24.1	21.9
Other	12.6	*8.9	21.5	1.6	*3.0	2.0
Total	764.2	295.3	1 059.5	100.0	100.0	100.0

¹ Multiple reasons could be stated.

7

PERSONS AGED 15 TO 54 YEARS WITH POST-SCHOOL QUALIFICATIONS: EDUCATIONAL ATTAINMENT, STUDY STATUS AND INTENTIONS¹ TO DO A COURSE

	15-24 years '000	25-34 years '000	35-44 years '000	45-54 years '000	Total '000
Educational attainment					
Masters degree, Doctorate	**	*10.3	15.6	18.7	44.6
Post-graduate diploma	**	22.6	39.4	32.6	96.0
Bachelor degree	38.4	77.7	68.7	41.0	225.9
Undergraduate diploma	**	24.3	30.3	21.4	78.9
Associate diploma	32.2	51.9	44.9	31.2	160.1
Skilled Vocational Qualification	29.8	89.3	70.7	51.6	241.5
Basic Vocational Qualification	39.8	58.4	57.9	56.5	212.6
Current study status					
Currently studying post-school	*9.8	47.0	31.3	17.7	105.9
Currently studying VCE or certificate ²	**	*3.2	**	**	*7.2
Not currently studying post-school qualification	115.5	283.3	294.2	233.3	926.3
Course intentions					
Intend to start a course leading to a post-school qualification	16.3	35.6	23.6	13.7	89.2
Intend to start studying VCE or certificate ²	**	*5.9	*3.4	**	11.3
Do not intend to start a course leading to a post-school qualification	112.8	274.5	281.4	226.8	895.5
Don't know if intend to start a course leading to an educational qualification	15.0	17.6	18.6	*10.6	61.8
Total³	144.4	334.6	327.5	253.0	1 059.5

¹ Persons intending to start a course of study leading to an educational qualification in the next six months.

² Includes certificates of less than one semester.

³ Includes persons who are still studying and retired persons who are studying.

EMPLOYED PERSONS AGED 15 TO 54 YEARS: AGE, CHANGE IN TYPE OF WORK, PREFERRED
OCCUPATION¹ AND CURRENT STUDY STATUS AND COURSE INTENTIONS² BY SEX

	Males '000	Females '000	Persons '000	Males %	Females %	Persons %
Age group (years)						
15-19	77.6	74.5	152.2	51.0	49.0	100.0
20-24	128.7	116.2	245.0	52.6	47.4	100.0
25-34	305.2	214.2	519.4	58.8	41.2	100.0
35-44	290.0	238.5	528.5	54.9	45.1	100.0
45-54	225.9	161.0	386.9	58.4	41.6	100.0
Change in type of work³						
Change of occupation	336.7	239.1	575.8	58.5	41.5	100.0
Additional occupation commenced	85.4	75.3	176.9	53.1	46.9	100.0
Promotion in similar kind of work	222.5	140.3	362.8	61.3	38.7	100.0
Promotion in different kind of work	111.5	68.1	179.6	62.1	37.9	100.0
Different kind of work at similar level	152.1	129.0	281.1	54.1	45.9	100.0
Similar kind of work with more difficulty	243.9	151.0	395.0	61.8	38.2	100.0
Now requires more computing skills	275.3	265.3	540.6	50.9	49.1	100.0
Now requires more general skills	264.9	155.8	420.7	63.0	37.0	100.0
More responsibilities or duties/wider range of tasks	475.4	361.1	836.5	56.8	43.2	100.0
None of the above	225.3	154.4	379.8	59.3	40.7	100.0
Retired	**	—	**	**	—	**
Changed to home duties	*4.5	35.6	40.0	*11.2	88.8	100.0
Other	10.6	*8.9	19.4	54.4	*45.6	100.0
Preferred occupation group						
Managers and administrators	27.6	*8.1	35.6	77.4	*22.6	100.0
Professionals	54.1	86.8	140.9	38.4	61.6	100.0
Para-professionals	14.8	*9.7	24.6	60.4	*39.6	100.0
Tradespersons	40.9	*8.0	49.0	83.6	*16.4	100.0
Clerks	*6.5	30.6	37.0	*17.4	82.6	100.0
Salespersons and personal service workers	13.5	27.0	40.5	33.3	66.7	100.0
Plant and machine operators and drivers	12.4	**	13.6	91.2	**	100.0
Labourers and related workers	*6.5	*3.6	*10.1	*64.4	*35.6	*100.0
Not known	59.0	48.7	107.7	54.8	45.2	100.0
Not applicable ⁴	792.1	580.8	1 372.9	57.7	42.3	100.0
Current study status						
Currently studying post-school qualification	86.8	73.0	159.8	54.3	45.7	100.0
Currently studying VCE or certificate ⁵	*3.6	*4.9	*8.5	*42.2	*57.8	*100.0
Not currently studying post-school qualification	888.9	666.4	1 555.3	57.2	42.8	100.0
Course intentions						
Intend to start a course leading to a post-school qualification	74.8	66.7	141.4	52.9	47.1	100.0
Intend to start studying VCE or certificate ⁶	12.9	*11.0	23.9	54.1	*45.9	100.0
Do not intend to start a course leading to a post-school qualification	880.4	687.3	1 567.8	56.2	43.8	100.0
Don't know if intend to start a course leading to an educational qualification	55.6	38.5	94.1	59.0	41.0	100.0
Total⁶	1 027.4	804.5	1 831.9	56.1	43.9	100.0

¹ Persons indicating the occupation group they would prefer to work in.

² Persons intending to start a course of study leading to an educational qualification in the next six months.

³ Multiple selections accepted.

⁴ Includes persons who were working in preferred occupation and persons who did not state preferred occupation.

⁵ Includes certificates of less than one semester.

⁶ Includes persons who are still studying and retired persons who are studying.

9

EMPLOYED PERSONS AGED 15 TO 54 YEARS: WHETHER WORKING IN PREFERRED OCCUPATION
BY NUMBER OF POST-SCHOOL QUALIFICATIONS

	No qual- ifications '000	1 qual- ification '000	2 or more qual- ifications '000	Total '000	No qual- ifications %	1 qual- ification %	2 or more qual- ifications %	Total %
Preferred occupation								
Working in preferred occupation	628.0	476.8	210.9	1 315.8	65.7	77.2	81.6	71.8
Not working in preferred occupation	238.3	122.1	43.5	404.0	24.9	19.8	16.8	22.1
Don't know	28.5	18.3	*4.1	51.0	3.0	3.0	*1.6	2.8
Not stated	61.2	**	**	61.2	6.4	**	**	3.3
Total	956.0	617.3	258.6	1 831.9	100.0	100.0	100.0	100.0

10

EMPLOYED PERSONS AGED 15 TO 54 YEARS: PREVIOUS OCCUPATION, NUMBER OF POST-SCHOOL
QUALIFICATIONS AND PERCEIVED QUALIFICATION REQUIREMENT¹ BY CURRENT OCCUPATION

	Managers and admin- istrators '000	Prof- essionals '000	Para prof- essionals '000	Trades- persons '000	Clerks '000	Sales persons and personal service workers '000	Plant and machine operators and drivers '000	Labourers and related workers '000	Total ² '000
Previous occupation in last 10 years									
Managers and administrators	17.3	13.9	*3.3	*7.1	11.6	*8.2	*4.4	*6.4	72.1
Professionals	15.1	49.2	*7.6	**	18.7	18.6	*3.2	*3.7	117.6
Para-professionals	*6.4	*7.9	*6.6	*3.0	**	*4.1	**	**	30.8
Tradespersons	*10.3	*7.2	*4.9	26.1	*4.4	*4.4	16.5	27.4	101.2
Clerks	13.0	19.1	*7.8	*9.5	49.3	31.3	*4.0	11.8	145.8
Salespersons and personal service workers	18.3	20.1	12.4	15.4	39.0	53.6	*6.7	21.0	188.8
Plant and machine operators and drivers	*4.6	**	**	14.0	*4.3	*6.3	16.2	20.0	67.6
Labourers and related workers	*3.3	12.3	*5.8	26.6	14.9	22.1	14.1	25.4	124.3
Not applicable	96.3	142.6	66.1	183.8	135.2	122.3	77.1	99.0	983.4
Number of qualifications									
No qualifications	88.3	45.9	22.9	119.3	183.3	166.2	102.2	165.3	956.0
1 qualification	63.8	101.3	64.0	139.4	79.1	85.2	35.8	48.2	617.3
2 or more qualifications	32.5	126.3	28.3	28.4	16.0	19.4	*5.0	**	258.6
Perceived qualification requirement¹									
Qualification attained needed for current employment	55.7	206.5	77.6	141.6	41.9	53.6	19.4	17.9	614.9
Qualification attained not needed for current employment	42.4	23.4	14.2	23.2	56.7	60.2	25.8	36.6	282.7
Total³	184.6	273.4	115.1	287.0	278.5	270.9	143.0	216.3	1 831.9

¹ Post-school qualification or certificate of less than one semester required for current occupation from employees perspective.² Includes persons who did not state their occupation.³ Includes persons without qualifications and persons stating that a qualification other than attained was required.

11

EMPLOYED PERSONS AGED 15 TO 54 YEARS WITH COMPLETED POST-SCHOOL QUALIFICATION: MAIN OCCUPATION BY WHETHER WORKING IN PREFERRED OCCUPATION

Main occupation	Working in preferred occupation '000	Not working in preferred occupation '000	Don't know '000	Total '000	Working in preferred occupation %	Not working in preferred occupation %	Don't know %	Total %
Managers and administrators	83.0	*9.7	*3.6	96.3	86.2	*10.1	*3.7	100.0
Professionals	203.4	20.2	*4.0	227.6	89.4	8.9	*1.8	100.0
Para-professionals	81.5	*8.8	**	92.2	88.4	*9.5	**	100.0
Tradespersons	141.9	23.9	**	167.7	84.6	14.2	**	100.0
Clerks	64.2	25.3	*5.7	95.2	67.5	26.6	*6.0	100.0
Salespersons and personal service workers	67.1	34.2	*3.3	104.6	64.2	32.7	*3.2	100.0
Plant and machine operators and drivers	22.9	17.6	**	40.8	56.1	43.1	**	100.0
Labourers and related workers	23.1	26.2	**	51.0	45.4	51.3	**	100.0
Total¹	687.7	165.7	22.5	875.9	78.5	18.9	2.6	100.0

¹Includes persons who did not state their occupation

12

EMPLOYED PERSONS AGED 15 TO 54 YEARS WITH COMPLETED POST-SCHOOL QUALIFICATION: MAIN OCCUPATION, LENGTH OF CURRENT EMPLOYMENT AND PREFERRED OCCUPATION BY PERCEIVED QUALIFICATION REQUIREMENT¹

Main occupation	Qualification needed for current employment '000	Qualification not needed for current employment '000	Total ² '000	Qualification needed for current employment %	Qualification not needed for current employment %	Total ² %
Managers and administrators	51.1	40.6	96.3	53.1	42.2	100.0
Professionals	201.9	22.8	227.6	88.7	10.0	100.0
Para-professionals	76.2	13.6	92.2	82.7	14.8	100.0
Tradespersons	141.0	22.9	167.7	84.1	13.7	100.0
Clerks	39.0	51.5	95.2	41.0	54.1	100.0
Salespersons and personal service workers	48.2	56.1	104.6	46.0	53.6	100.0
Plant and machine operators and drivers	15.7	23.7	40.8	38.6	58.2	100.0
Labourers and related workers	15.6	32.0	51.0	30.5	62.8	100.0
Length of current employment						
Less than 12 months	52.1	52.0	109.9	47.4	47.3	100.0
12 months to less than 2 years	41.4	21.2	66.2	62.5	32.1	100.0
2 years to less than 5 years	101.2	64.6	169.4	59.8	38.1	100.0
5 years to less than 10 years	133.4	57.2	195.9	68.1	29.2	100.0
10 years or more	258.9	67.0	330.6	78.3	20.3	100.0
Seasonal work only	**	**	**	**	**	**
Preferred occupation group						
Working in preferred occupation	510.2	161.9	687.7	74.2	23.5	100.0
Not working in preferred occupation	67.5	91.5	165.7	40.7	55.2	100.0
Don't know	11.6	*9.9	22.5	51.7	*43.9	100.0
Total³	589.4	263.3	875.9	67.3	30.1	100.0

¹ Post-school qualification or certificate of less than one semester required for current occupation from employees perspective.

² Includes persons who stated a qualification was required for current occupation.

³ Includes not stated.

UNEMPLOYED PERSONS AGED 15 TO 54 YEARS: AGE, PREFERRED OCCUPATION¹ AND CURRENT STUDY STATUS AND INTENTIONS² TO DO A COURSE BY SEX

	Males '000	Females '000	Persons '000	Males %	Females %	Persons %
Age group (years)						
15-19	24.1	24.0	48.0	50.1	49.9	100.0
20-24	13.5	16.2	29.8	45.4	54.6	100.0
25-34	24.1	17.1	41.3	58.5	41.5	100.0
35-44	22.3	19.0	41.3	53.9	46.1	100.0
45-54	25.8	*7.7	33.4	77.1	*22.9	100.0
Preferred occupation group						
Managers and administrators	*8.4	**	*10.1	*83.2	**	*100.0
Professionals	22.4	15.5	37.9	59.1	40.9	100.0
Para-professionals	**	**	*4.2	**	**	*100.0
Tradespersons	14.6	**	16.2	90.0	**	100.0
Clerks	*8.6	17.3	25.8	*33.2	66.8	100.0
Salespersons and personal service workers	*5.5	15.6	21.1	*26.1	73.9	100.0
Plant and machine operators and drivers	*7.0	**	*7.8	*90.5	**	*100.0
Labourers and related workers	*5.7	*5.1	*10.8	*52.4	*47.6	*100.0
Did not know preferred occupation	27.7	19.4	47.1	58.9	41.1	100.0
Not stated	*7.5	*5.1	12.6	*59.4	*40.6	100.0
Current study status						
Currently studying post-school qualification	*6.5	**	*9.4	*69.4	**	*100.0
Currently studying VCE or certificate ³	**	**	**	**	**	**
Not currently studying post-school qualification	88.9	69.8	158.7	56.0	44.0	100.0
Course intentions						
Intend to start a course leading to a post-school qualification	13.4	*6.2	19.6	68.3	*31.7	100.0
Intend to start studying VCE or certificate ³	**	*3.6	*4.5	**	*79.5	*100.0
Do not intend to start a course leading to a post-school qualification	84.8	66.3	151.1	56.1	43.9	100.0
Don't know if intend to start a course leading to an educational qualification	*10.3	*7.5	17.8	*57.8	*42.2	100.0
Total⁴	109.7	84.0	193.7	56.6	43.4	100.0

¹ Persons indicating the occupation group they would prefer to work in.

² Persons intending to start a course of study leading to an educational qualification in the next six months.

³ Certificates of less than one semester.

⁴ Includes persons who are still studying and retired persons who are studying.

EXPLANATORY NOTES

INTRODUCTION

1 This publication summarises the results of a survey of *Education Attainment and Employment in Victoria* that was conducted throughout Victoria during October 1995 as a supplement to the Australia-wide Monthly Population Survey.

MONTHLY POPULATION SURVEY

2 The Monthly Population Survey is based on a multi-stage sample of private and non-private dwellings. Private dwellings include houses, flats, home units, tents, and any other structures used as private residences at the time of the survey.

Special dwellings, which includes hotels, caravan parks, hospitals, flop houses, etc. were not included in the survey.

3 The sample covers about two-thirds of 1% of the civilian population of Australia and includes about one-half of 1% of Victoria's population. Information is obtained from the occupants of selected dwellings by personal interview.

4 The Monthly Population Survey comprises the labour force survey and for most months of the year, an additional supplementary topic. The main emphasis is on the regular collection of specific data on demographic and labour force characteristics of the population and for this reason, this component is usually referred to as the Labour Force Survey. Supplementary surveys are carried out on a wide variety of topics.

SCOPE

5 All persons aged 15 years and over are included in the labour force survey except:

- certain diplomatic personnel of overseas governments customarily excluded from census and estimated populations;
- overseas visitors holidaying in Australia;
- members of the permanent defence forces; and
- members of non-Australian defence forces (and their dependants) stationed in Australia.

SURVEY DESIGN

6 The supplementary survey was conducted using the sample of private dwellings in Victoria that were included in the Monthly Population Survey. This provided a sample of approximately 5,000 persons where a full response was obtained. Persons in special dwellings were excluded from the supplementary survey. Information was collected by personal interview of an adult in the household for usual residents aged 15 to 65 years inclusive. In this publication, only persons aged 15 to 54 were reported on.

DEFINITIONS

ABSCQ (Australian Bureau of Statistics Classification of Qualifications)

7 The classification of recognised educational qualifications intended for use across all relevant ABS data collections. The classification is detailed in the *ABS Classification of Qualifications* (1262.0)

The ABSCQ collects seven levels of attainment as follows:

Higher Degree;
Postgraduate Diploma;
Bachelor Degree;
Undergraduate Diploma;
Associate Diploma;
Skilled Vocational Qualifications; and
Basic Vocational Qualifications.

Associate diploma

8 The entry requirement is usually the completion of Year 12 or the completion of Year 10 and a prerequisite certificate course. The duration of study ranges from one to two years full-time study or equivalent. Courses provide individuals with the knowledge and skills necessary to give support to professionals, and for positions in advanced trade, technical or associate professional occupations. Examples are an Associate Diploma in Business Administration, an Associate Diploma of Engineering in Civil Engineering. Advanced Certificates, Technician Certificates and Certificates of Technology are included in this classification.

Bachelor degree

9 The entry requirement is the satisfactory completion of Year 12 or its equivalent. The duration of study ranges from three to six years full-time study or equivalent. Courses are designed to provide students with a systematic and coherent introduction to a broad body of knowledge. The emphasis is on the underlying principles and concepts of the body of knowledge. Examples are a Bachelor of Architecture, a Bachelor of Education in Early Childhood Teaching and a Bachelor of Science in Mathematics or Statistics (Honours).

Basic vocational qualification

10 The entry requirement is often Year 10, although many courses have no formal entry requirements. The duration of study is usually short typically ranging from two hundred hours to one year of full-time study or equivalent. Courses are designed to provide students with a limited range of practical skills and the associated knowledge needed to perform a limited range of skilled tasks. Examples are a Pre-apprenticeship in Plumbing, Certificate in Cake Decorating and Traineeship Certificate in Advertising.

Certificates of less than one semester

11 Generally courses have no formal entry requirements. The duration of study is less than one semester of full time study or less than 200 hours of full-time study.

Educational attainment

12 Measures the highest qualification attained by the respondent, with post-school qualifications classified according to the Australian Bureau of Statistics Classification of Qualifications (ABSCQ). For the purpose of the ABSCQ, level of (educational) attainment is the recognition by an accredited authority, that a person possesses knowledge and practical ability of a certain quality and quantity. Note: Persons who reported having a certificate of less than one semester are not considered by the ABSCQ to have attained a post-school qualification.

Educational institution	13 Any institution whose primary role is education. Included are schools, universities, colleges of technical and further education, public and private colleges, etc. Excluded are institutions whose primary role is not education (e.g. hospitals).
Educational qualification	14 A course of study for which an award is conferred upon completion. Secondary school certificates and certificates which required the equivalent of less than one semester of full-time study to complete are included. Note that these educational qualifications are not considered to be post-school qualifications.
Employed	<p>15 Persons aged 15 and over who, during the reference week:</p> <ul style="list-style-type: none"> (a) worked for one hour or more for pay, profit, commission or payment in kind in a job or business, or on a farm (comprising employees, employers and self-employed persons); or (b) worked for one hour or more without pay in a family business or on a farm (i.e. unpaid family helpers); or (c) were employees who had a job but were not at work and were: on paid leave; on leave without pay for less than four weeks up to the end of the reference week; stood down without pay because of bad weather or plant breakdown at their place of employment for less than four weeks up to the end of the reference week; on strike or locked out; on workers' compensation and expecting to be returning to their job or receiving wages or salary while undertaking full-time study; or (d) were employers, self-employed persons or unpaid family helpers who had a job, business or farm, but were not at work.
Higher degree	16 Includes doctorates and masters degrees. The minimum entry requirements are usually a masters degree or first class honours for a doctorate and first class honours for a masters degree. The duration of study is a minimum of two to four years for a doctorate and two years full-time or equivalent for a masters degree. This level of qualification is designed to recognise significant contributions to original research or the application of knowledge within a given field of study. Examples are a Doctor of Veterinary Studies, a Doctor of Education in Curriculum (EdD), a Master of Counselling, a Master of Arts in Sociology and a Fellowship of the Royal Australian College of Physicians (FRACP).
Industry	17 Classified according to the <i>Australian and New Zealand Standard Industrial Classification (ANZSIC) (1292.0)</i>
Labour force	18 All persons who, during the reference week, were employed or unemployed.
Labour force status	19 A classification of the civilian population aged 15 years and over into employed, unemployed or not in the labour force, as defined. The definitions conform closely to the international standard definitions adopted by the International Conferences of Labour Statisticians.
Main English-speaking countries	20 Comprises United Kingdom, Ireland, Canada, South Africa, USA and New Zealand.

Main field of study	21 Persons who had obtained, or were studying for, a post-school qualification indicated the main field of study for that qualification.
Not in the labour force	22 Persons who were not in the categories <i>employed</i> or <i>unemployed</i> as defined.
Occupation	23 Classification according to the <i>Australian Standard Classification of Occupations (ASCO)</i> , 1986. For those who have worked as a wage or salary earner in the last 12 months, it is the occupation in the job with their main period employer. For those who have only worked in their own business, it is their occupation in that business.
Post-graduate diploma	25 Qualifications held by those who had left school and answered 'Yes' to the question 'Since leaving school, have you completed an educational qualification such as a trade certificate, other certificate, diploma or degree?' Note that <i>post-school qualifications</i> does not include secondary school certificates.
Post-school qualifications	24 Includes Graduate Certificates. The entry requirement is usually the successful completion of a bachelor degree or an undergraduate diploma. The duration of study ranges from six months (for a Graduate Certificate) to one year full-time study or equivalent. Courses usually build on undergraduate studies, and are designed to broaden or develop professional knowledge and skills in a related or new area of study. Examples are a Graduate Diploma in Teacher Librarianship, a Graduate Diploma of Business in Hospitality, a Diploma in Clinical Pathology, a Diploma of Education in Special Education and a Graduate Certificate in Business.
Reference week	26 The week before the interview.
Skilled vocational qualification	27 The entry requirement is the satisfactory completion of Year 10 or its equivalent. The duration of study ranges from two to four years full-time study or equivalent and typically incorporates some on-the-job training. Courses are designed to provide students with a high degree of practical skill together with theoretical and factual knowledge. Examples are a Trade Certificate in Vehicle Building, Certificate in Landscape Design and Apprenticeship in Electrical Fitting.
TAFE college	28 College of Technical and Further Education.
Training courses	29 Training activities which are designed and/or undertaken to maintain, develop or learn skills related to job performance and/or competency. They consist of periods of instruction or a combination of instruction and monitored practical work. The instruction can include workshops, lectures, tutorials, training seminars, audio-visual presentations, demonstration sessions or monitored self-paced training packages.
Unemployed	30 Persons aged 15 and over who were not employed during the reference week and: (a) had actively looked for full-time or part-time work at any time in the four weeks up to the end of the reference week and:

- (i) were available for work in the reference week, or would have been available except for temporary illness (i.e. lasting for less than four weeks to the end of the reference week); or
- (ii) were waiting to start a new job within four weeks from the end of the reference week and would have started in the reference week if the job had been available then; or
- (b) were waiting to be called back to a full-time or part-time job from which they had been stood down without pay for less than four weeks up to the end of the reference week (including the whole of the reference week) for reasons other than bad weather or plant breakdown.

Undergraduate diploma

31 The entry requirement is usually the successful completion of Year 12 or its equivalent. The duration of the study is three years full-time study or equivalent. Courses are designed to provide individuals with the knowledge and skills necessary for practice in a professional or associate professional occupation. Examples are a Certificate in Psychiatric Nursing, a Diploma of Applied Arts in Graphic Design and a Diploma of Teaching (Primary).

University

32 Also includes Institutes of Technology and other colleges or institutes that award Bachelor degrees or higher (or their equivalent).

Related publications and information

33 The ABS produces a wide range of publications relating to the Monthly Labour Force Survey. Some of these are:

- *Labour Force, Australia* (6203.0)
- *Labour Force, Victoria* (6202.2)
- *Participation in Education, Australia 1995* (6272.0)
- *Education and Training in Australia* (4224.0)
- *Transition from Education to Work, Australia 1995* (6227.0)

Previous State Supplementary Surveys

34 Users may be interested in reading past Victorian State Supplementary Survey publications. These have included:

- 1994: *Travel to Work, School and Shops, Victoria* (9201.2)
- 1993: *Retrenched Workers and Workers who Accepted Redundancy Packages, Victoria* (6266.2)
- 1992: *Safety in the Home, Victoria* (4387.2)
- 1991: *Work Patterns of Women, Victoria* (6204.2)
- 1990: *Community Participation in Energy Conservation, Victoria* (4120.2)
- 1989: *Sports Participation, Victoria* (4118.2)
- 1988: *Type and conditions of part-time employment, Victoria* (6304.2)
- 1987: *Crime and Crime Prevention, Victoria* (4507.2)
- 1886: *Water Using Appliances, Victoria* (8709.2)

Symbols and other usages

- nil or rounded to zero
- * estimate is subject to a relative standard error of between 25% and 50%.
- ** estimate is subject to sampling variability too high for most practical purposes (more than 50%).
- n.a. not applicable.

Refer to the technical notes.

TECHNICAL NOTES

INTRODUCTION

1 The figures contained in this publication are estimates based on a sample of approximately 5,000 persons in Victoria in October 1995.

RELIABILITY OF THE ESTIMATES

2 The estimates provided in this publication may be subject to two types of error:

Sampling error

3 This is the difference which would be expected between the estimate and the corresponding figure that would have been obtained from a collection based on the whole population, using the same questionnaires and procedures. Estimates of sampling error are illustrated below.

Non-sampling error

4 Inaccuracies may occur because of imperfections in reporting by respondents and interviewers, and errors made in coding and processing the data. These errors can occur whether the estimates are derived from a sample or a complete enumeration. Every effort is made to reduce non-sampling error to a minimum by careful design of questionnaires, intensive training and supervision of interviewers and efficient operating procedures.

INTERPRETATION OF RESULTS

5 Since the estimates in this publication are based on information obtained from occupants of a sample of dwellings both of the above types of errors must be taken into account.

ESTIMATES OF SAMPLING ERROR

6 One measure of the likely difference which would be expected between the estimate based on a sample and the figure that would have been obtained from a complete collection is the standard error (see Table of standard errors page 19).

7 There are about two chances in three (67%) that an estimate will differ by less than one standard error from that which would have been obtained if all households had been included in the survey. There are about nineteen chances in twenty (95%) that the difference will be less than two standard errors.

8 A standard error expressed as a percentage of the estimate is known as the 'relative standard error'. For example, if an estimate of 4,000 persons has a standard error of 1,800 then the estimate has a relative standard error of $1,800/4,000 \times 100 = 43\%$. The relative standard error is a useful measure in that it provides an immediate indication of the percentage errors likely to have occurred due to sampling.

9 Estimates below 3,000 persons are excluded from this publication and are replaced with two asterisks (**) because they are subject to high relative standard error (more than 50%). Although figures for these small components can in some cases be derived by subtraction they should not be regarded as reliable.

10 Estimates between 3,000 and 11,000 persons have been included in this publication preceded by an asterisk, e.g. *4.6. This is to highlight the need for care in using the data because of the high relative standard error (between 25 and 50%).

11 An example of the calculation on use of standard errors is as follows. From the table of standard errors on page 19 we see that a population estimate of 5,000 persons (column 1) has a standard error of 1,900 (column 2). Therefore, there are two chances in three that the number which would result if all persons were included in the survey lies in the range 3,100 to 6,900 (one standard error either side of the estimate, column 4). There are 19 chances in 20 that the true number lies in the range 1,200 to 8,800 (2 standard errors either side of the estimate, column 5).

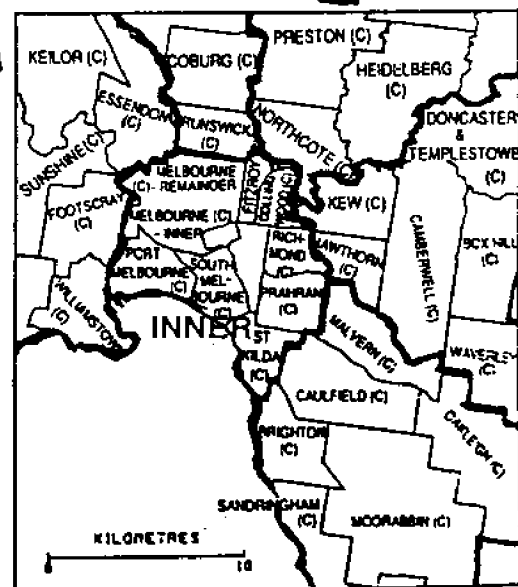
12 A more detailed explanation of standard errors can be found in the technical notes of *Labour Force, Australia* (6203.0)(monthly).

STANDARD ERRORS OF ESTIMATES¹ EDUCATIONAL ATTAINMENT AND EMPLOYMENT, VICTORIA,
OCTOBER, 1995

Size of estimate '000	Standard error of estimate '000	Relative standard error (%)	There are about two chances in three that the actual population figure will fall in the range ²		There are about nineteen chances in twenty that the actual population figure will fall in the range ²	
			'000		'000	
.7	0.7	103.8	0.0	- 1.4	0.0	- 2.2
1.0	0.9	87.2	0.1	- 1.9	0.0	- 2.7
1.5	1.1	71.3	0.4	- 2.6	0.0	- 3.6
2.0	1.2	61.7	0.8	- 3.2	0.0	- 4.5
2.5	1.4	55.0	1.1	- 3.9	0.0	- 5.3
3.0	1.5	50.1	1.5	- 4.5	0.0	- 6.0
3.5	1.6	46.2	1.9	- 5.1	0.3	- 6.7
4.0	1.8	43.1	2.3	- 5.8	0.5	- 7.5
5.0	1.9	38.3	3.1	- 6.9	1.2	- 8.8
7.0	2.3	32.0	4.8	- 9.3	2.5	- 11.5
10.0	2.7	26.4	7.6	- 12.7	4.7	- 15.3
15.0	3.2	21.1	11.9	- 18.2	8.7	- 21.3
20.0	3.6	18.0	16.4	- 23.6	12.8	- 27.2
30.0	4.3	14.3	25.7	- 34.3	21.4	- 38.6
40.0	4.9	12.1	35.2	- 44.9	30.3	- 49.7
50.0	5.3	10.6	44.7	- 55.3	39.4	- 60.6
100.0	7.1	7.1	93.0	- 107.1	85.9	- 114.1
150.0	8.3	5.5	141.7	- 158.3	133.4	- 166.6
200.0	9.3	4.6	190.8	- 209.3	181.5	- 218.5
300.0	10.8	3.6	289.2	- 310.8	278.4	- 321.6
500.0	13.1	2.6	487.0	- 513.1	473.9	- 526.1
1 000.0	16.7	1.7	983.4	- 1 016.7	966.7	- 1 033.3
2 000.0	21.1	1.1	1 979.0	- 2 021.1	1 957.9	- 2 042.1
5 000.0	28.2	0.6	4 971.9	- 5 028.2	4 943.7	- 5 056.3

¹ These figures have been rounded to the nearest 100.

² These figures have been calculated using the actual figures.

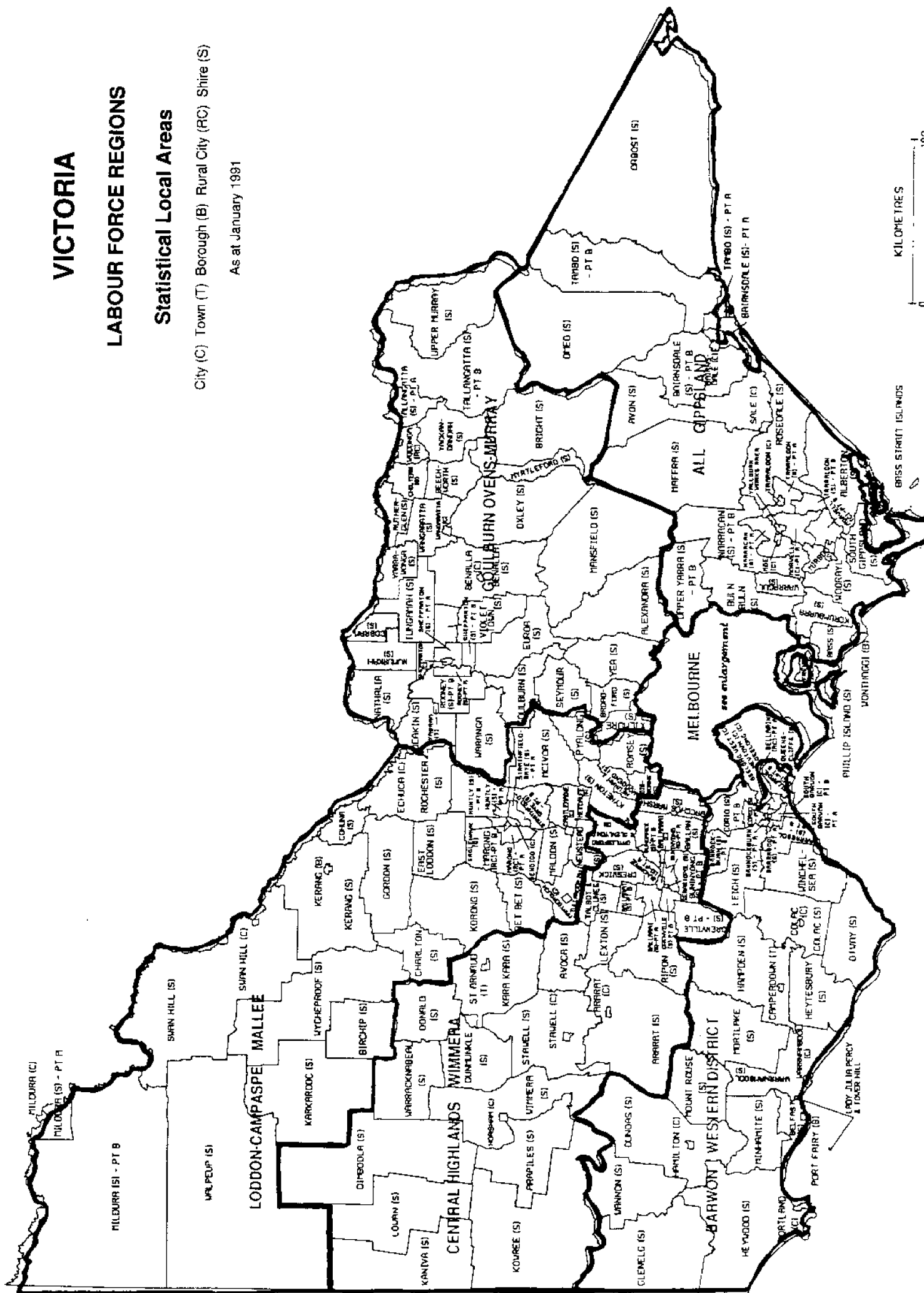


LABOUR FORCE REGIONS

Statistical Local Areas

City (C) Town (T) Borough (B) Rural City (RC) Shire (S)

As at January 1991



KILOMETRES

BRSS START 15L FWD

EDUCATION OUTCOMES

Victoria
October 1995

Need additional data?

The survey includes a comprehensive collection of information on educational attainment of Victorians and educational links to occupation. A customised service is now available to meet special data requirements.

Topics covered by the survey include:

- . Educational attainment
- . Number of post-school qualifications
- . Current study status
- . Study intentions
- . Reasons for studying
- . Short course/certificate training
- . Intended study institution
- . Change in occupation
- . Previous occupation
- . Preferred occupation
- . Length of employment in occupations
- . Qualification requirement for occupation
- . Changes in work
- . Reasons for changes in work

Data can be classified by the following variables:

- . Age
- . Sex
- . Labour Force Status
- . Family type
- . Labour Force Region
- . Educational attainment

To discuss your data requirements from *Education Attainment and Employment* or for further information regarding this survey, please contact **Janine Lloyd on (03) 9615 7689**

For more information . . .

The ABS publishes a wide range of statistics and other information on Australia's economic and social conditions. Details of what is available in various publications and other products can be found in the ABS Catalogue of Publications and Products available from all ABS Offices.

ABS Products and Services

Many standard products are available from ABS bookshops located in each State and Territory. In addition to these products, information tailored to the needs of clients can be obtained on a wide range of media by contacting your nearest ABS Office. The ABS also provides a Subscription Service for standard products and some tailored information services.

National Dial-a-Statistic Line

0055 86 400

Steadycom P/L: premium rate 25c/21.4 secs.

This number gives 24-hour access, 365 days a year, for a range of important economic statistics including the CPI.

Internet

<http://www.statistics.gov.au>

A wide range of ABS information is available via the Internet, with basic statistics available for each State, Territory and Australia. We also have Key National Indicators, ABS product release details and other information of general interest.

Sales and Inquiries

Keylink	STAT.INFO/ABS
X.400	(C:Australia,PUB:Telememo,O:ABS,FN:STAT,SN:INFO)
Internet	stat.info@abs.telememo.au

National Mail Order Service	(06) 252 5249
Subscription Service	1800 02 0608

	Information Inquiries	Bookshop Sales
SYDNEY	(02) 9268 4611	9268 4620
MELBOURNE	(03) 9615 7755	9615 7755
BRISBANE	(07) 3222 6351	3222 6350
PERTH	(09) 360 5140	360 5307
ADELAIDE	(08) 8237 7100	8237 7582
HOBART	(002) 205 800	205 800
CANBERRA	(06) 252 6627	207 0326
DARWIN	(089) 432 111	432 111



Client Services, ABS, GPO Box 2796Y, Melbourne 3001

ABS Catalogue No. 4227.2

Educational Attainment and Employment, Victoria

October 1995

Produced by the Australian Government Publishing Service
© Commonwealth of Australia 1996

Recommended retail price: \$14.50



2422720001958

ISBN 0 642 23157 5